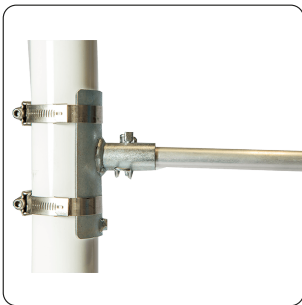


Standard Duty Post Mount System



What You'll Receive



A - Bracket x 2



B - Banding Strap x4



C - Drill Bit Tool x1



D - Metal Arm x2



E - Plastic End Caps x 2

Standard Duty Post Mount System

1. Position your **top bracket** (A) at the height you will be installing your Standard Duty Post Mount System.
2. Attach two **banding straps** (B) around the bracket to hold it in place on the column/post - one banding strap at the top of the bracket and one at the bottom.
3. Using the **drill bit tool** (C), tighten the banding straps until they are tensioned correctly and they are parallel to the edge of the bracket.
4. Remove the securing pin from the bracket and insert the **metal arm** (D). Secure by reinserting the securing pin at the top of the bracket.
5. Insert the metal arm into the top sleeve of the banner.
6. Insert the second metal arm into the bottom sleeve of the banner and into the bracket. Align the assembly against the column/post and mark the position you wish to install the bottom bracket.
7. Remove the banner and the metal arm from the bottom bracket and install the bottom bracket at the marked position (following steps 2 and 3).
8. Remove the securing pin from the bracket and insert the metal arm. Secure by reinserting the securing pin at the bottom of the bracket before inserting the metal arm into the bottom sleeve of the banner.
9. Install **plastic end caps** (E) to both top and bottom arms. The Standard Duty Post Mount System is now installed.
10. Use the 2 grub screws on the bracket to adjust the angle of the arms to increase/decrease banner tension.

Note: For the best visual results, you should have tension down the middle of the banner and both edges of the banner should be loose.

Need More Help?

Our team are only a phone call away and more than happy to answer any questions you might have.

Alternatively, you can visit [bannerbox.co.uk/guides](https://www.bannerbox.co.uk/guides) for more detailed guidance.