

Premium Café Barrier



What You'll Receive



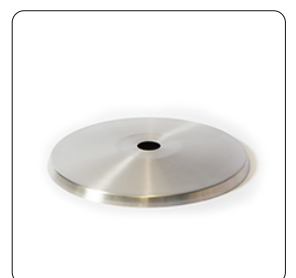
A - Spring Washer



B - Base Bolt



C - Base



D - Steel Base Cover



E - Flat Washer



F - Stainless Steel Post



G - Floating Disks



H - Crossbar

1. Place the **spring washer** (A) onto the **base bolt** (B). Lift the **base** (C) and insert the bolt and spring washer through the bottom. Lay the base flat on the floor
2. Lay the **steel base cover** (D) over the base and place the **flat washer** (E) onto the base bolt.
3. Place the bottom of the **steel post** (F) on top of the base bolt, turn the post clockwise by hand until you feel resistance.
4. Lift the base and hold the bolt in place whilst turning the post clockwise until completely secure. Carefully lower the base and pole back to the floor.
5. Holding the two **floating discs** (G), cut the cable tie and allow the bottom floating disc to sit on the base.
6. Repeat Steps 1 to 5 for the remainder of your posts.
7. Attach a **crossbar** (H) to the floating discs at the top of the two posts you are joining, adjusting the distance between the posts accordingly.
8. Unclip one side of the top crossbar and feed this through the top pocket in your banner. When all the way through, clip both ends of the crossbar back onto the top floating discs.
9. Thread the bottom crossbar through the bottom banner pocket. When the crossbar is all the way through, lift the bottom floating discs from the base and clip the crossbar to them.
10. Adjust the location of the bottom floating discs and the banner to achieve best finish.
11. Repeat step 7 to 10 for the remainder of your café barriers.

Need More Help?

Our team are only a phone call away and more than happy to answer any questions you might have.

Alternatively, you can visit [bannerbox.co.uk/guides](https://www.bannerbox.co.uk/guides) for more detailed guidance.