

Popular Café Barrier



What You'll Receive



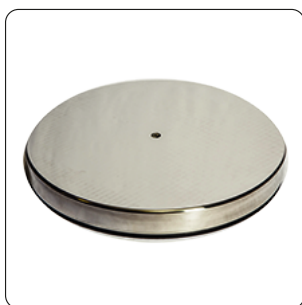
A - Steel Post



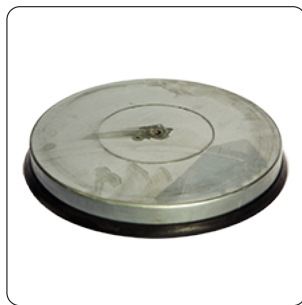
B - Floating Discs



C - Locknut



D - Steel Base Cover



E - Base



F - Crossbar

1. The top floating disc should already be installed at the top of the **steel post** (A). Insert another **floating disc** (B) onto the post.
2. Remove the **locknut** (C) from the post bolt, located at the bottom of the steel post.
3. Ensuring the **steel base cover** (D) is on the **base** (E), lift the base and insert the post bolt into the base, securing with the locknut. Lower the post and base back to the floor.
4. Repeat Steps 1 to 3 for the remainder of your posts.
5. Attach a **crossbar** (F) to the floating discs at the top of two café barriers, adjusting the distance between the posts accordingly.
6. Unclip one side of the top crossbar and feed this through the top pocket in your banner. When all the way through, clip both ends of the crossbar back onto the top floating discs.
7. Thread the bottom crossbar all the way through the bottom banner pocket. Lift the bottom floating discs from the base and clip the crossbar to them.
8. Adjust the location of the bottom floating discs and the banner to achieve best finish.
9. Repeat step 5 to 8 for the remainder of your posts.

Need More Help?

Our team are only a phone call away and more than happy to answer any questions you might have.

Alternatively, you can visit [bannerbox.co.uk/guides](https://www.bannerbox.co.uk/guides) for more detailed guidance.